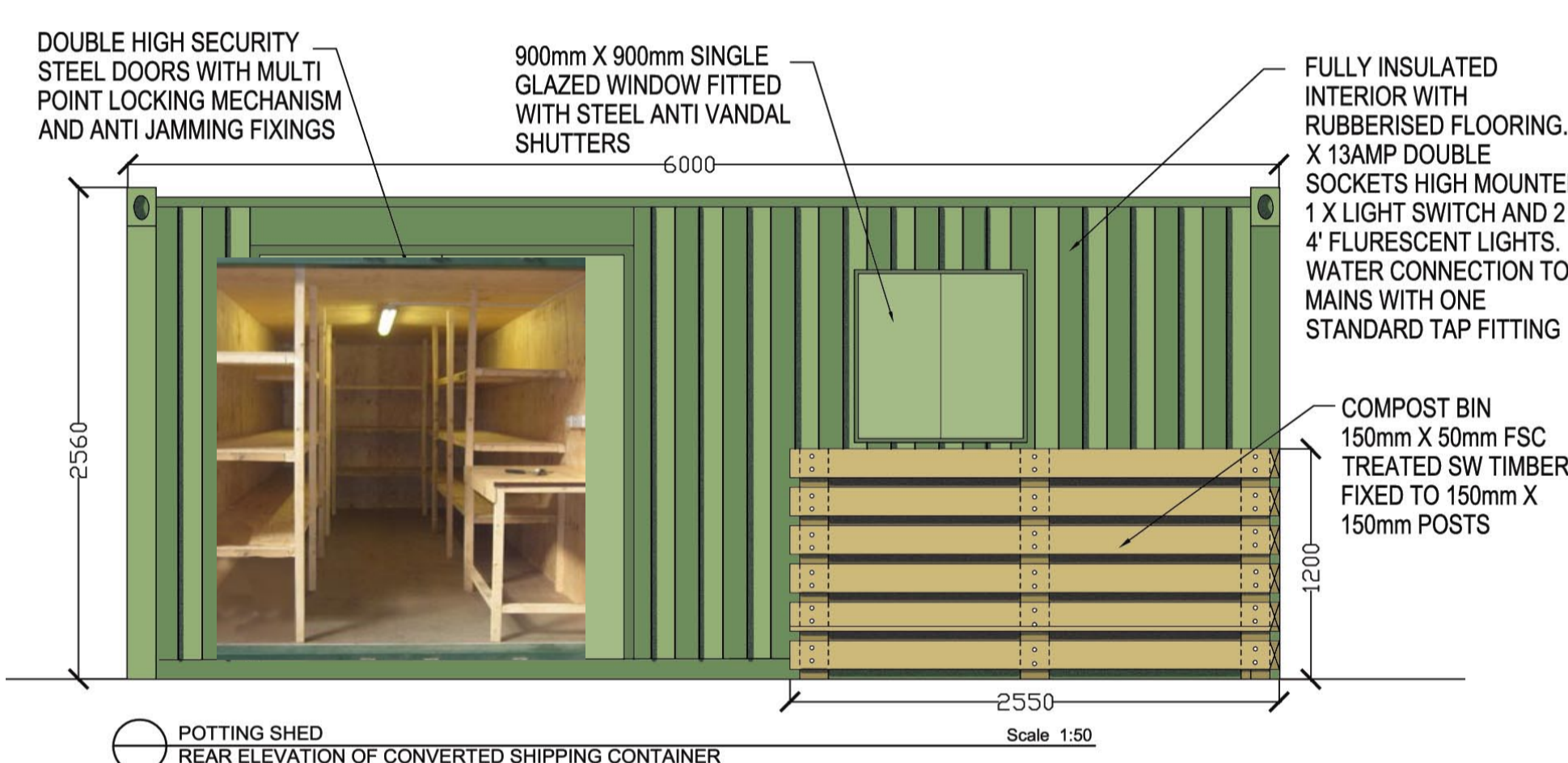
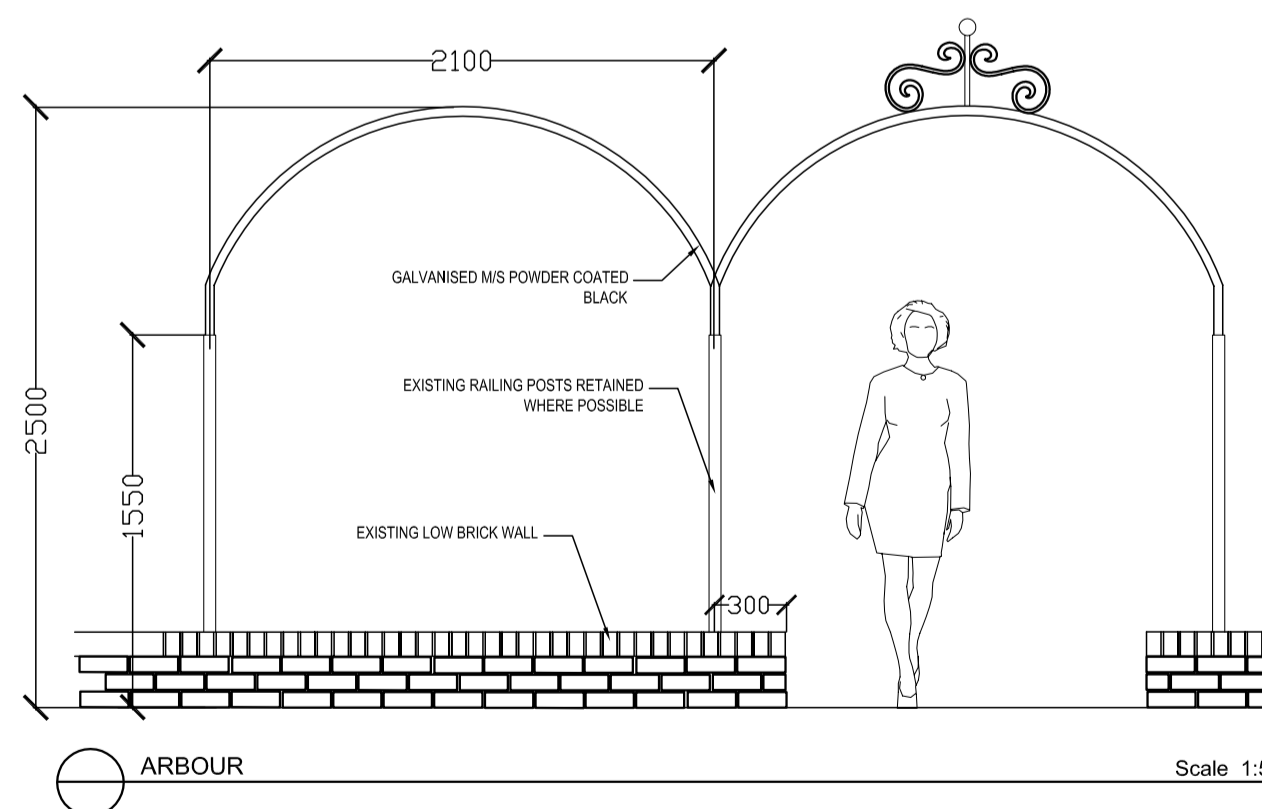
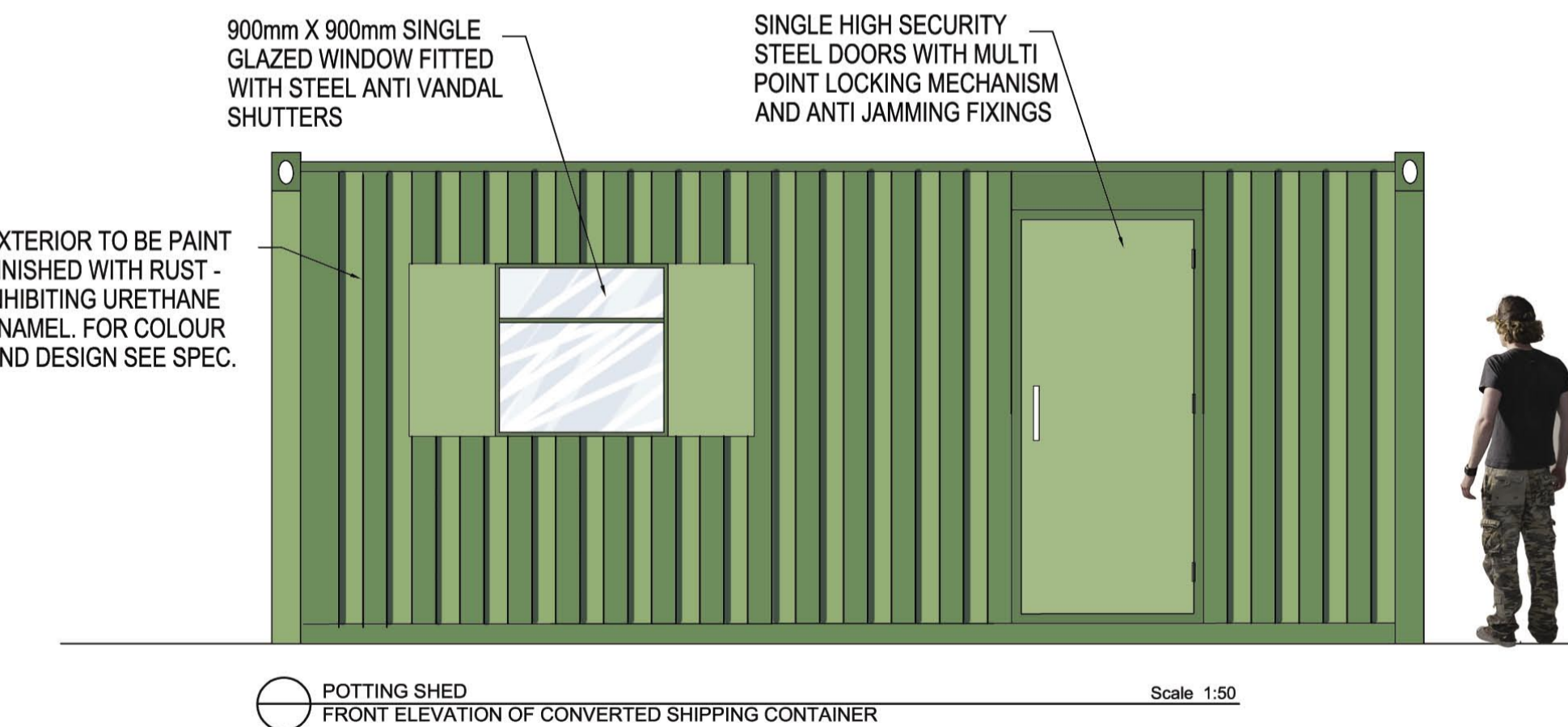


Community gardening area: raised planters and shipping container converted into potting shed



Corner entrance showing open seating area with new arbours



### Melior Street Gardens

The concept for this area originated from consultation with local residents and business owners. The gardens are currently underused and maintain an unsafe feel due to dead end corners and segregated spaces from enclosing metal railings and walls. Those consulted wanted to see a greener space with more character and opportunities for the whole community to use the space, including homeless people and street drinkers that until now have been seen as having negative impact on the area.

The opportunity to open the space through removing all the surrounding, negative barriers will transform the gardens into an inviting highly used pedestrian space. As well as removing physical barriers this design will also aim to remove the social issues associated with homeless people using the space. Working with a homeless initiative such as St Mungo's 'Putting Down Roots' a community garden area will be created within the space. Skilled charity workers will engage with homeless people currently using the area and assemble a team of homeless volunteers to help build and maintain the space.

The community garden will increase the biodiversity of this urban area and provide people within the surrounding mixed-use buildings with a green oasis to sit and enjoy.

Arbors will replace the low railings enabling climbers to grow, which will define and soften the space without blocking views. A small 'potting shed' structure will provide a hub for community work and give visitors a focal point. The spatial arrangement will complement the character and form of the surrounding street whilst adding an extra dimension of interest to this diverse, creative and ever-changing area.

